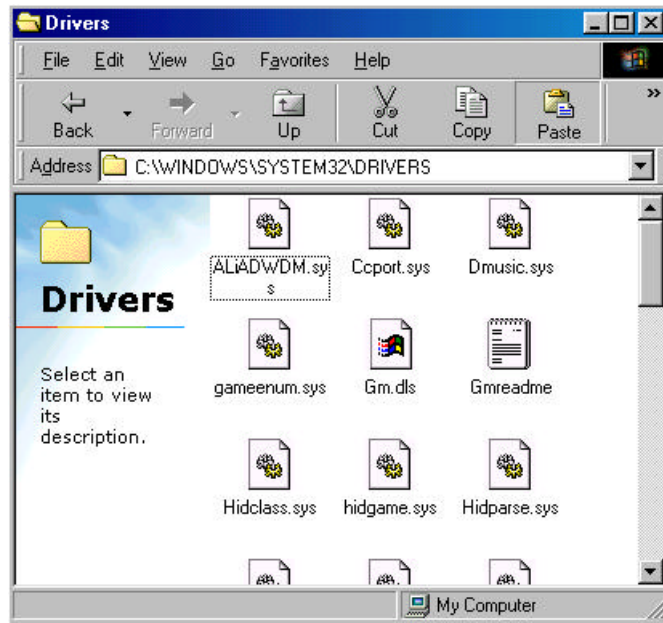


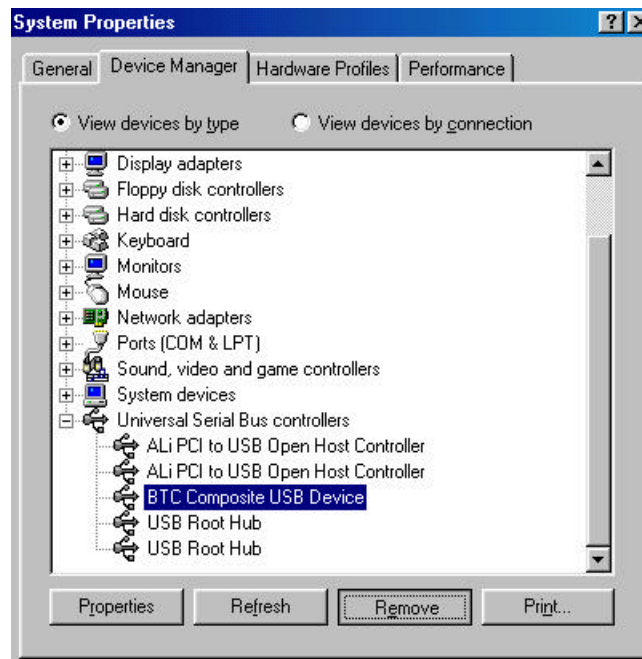
## Addendum for the K7ADA

1. For supporting S3 mode wake up function in WINDOWS 98se, please download the driver from SOYO web site ([www.soyo.com.tw](http://www.soyo.com.tw)).

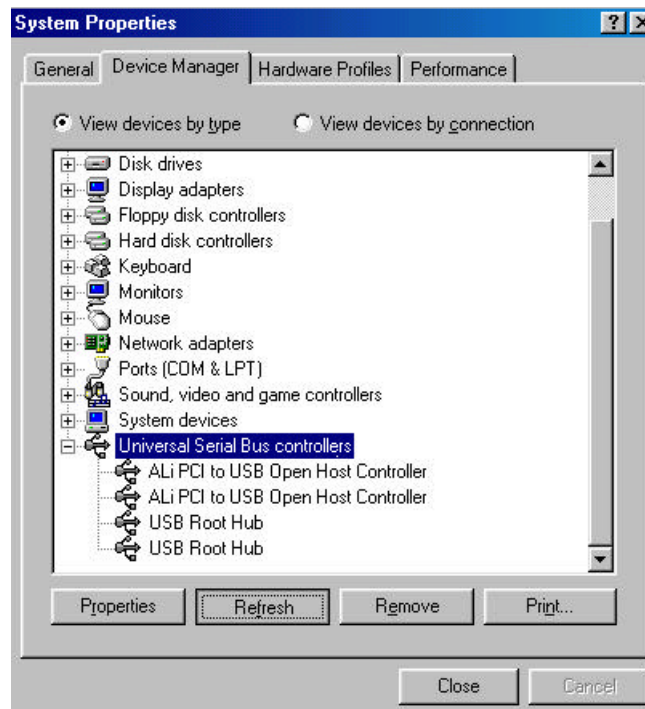
Please put this downloaded driver in c:\windows\system32\driver and remove USB device in “Device Manager” then refresh.



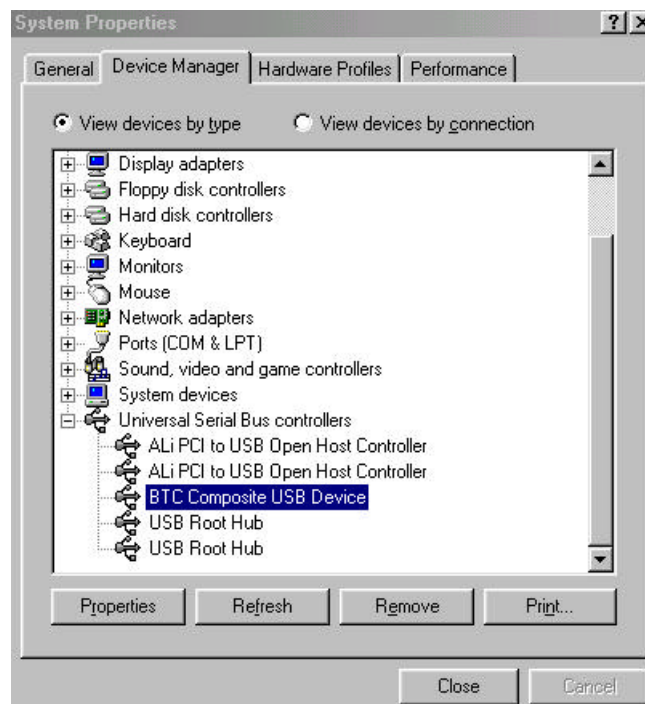
Please put this downloaded driver in c:\windows\system32\driver



Remove USB device(ex : USB keyboard, mouse, ..etc.)



### Refresh



### Final

2.If customer uses the WINDOWS 95 OSR2, please use the NT version driver when installing audio driver.

3.Right now, ALI chipset does not support ATI RAGE 128 graphics chip, so K7ADA can not support this kind of VGA card.